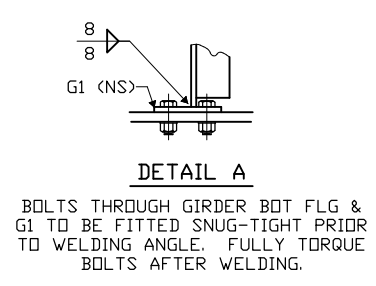


KCS RR Tapered GIRDER  
 PDC Sample DWG 116  
 CAROLINA STEEL CORPORATION  
 MERRICK CONSTRUCTION CO., INC.  
 LA DOT 2002



FABRICATED BY			SAN ANGELO		
HOLES			24ø (15ø)		
SHOP PAINT			PER HNI FOR ENDS OF GIRDER		
SHOP INSPECTION			WORK THIS SHT. W/ "HF13"		
GENERAL NOTES					
REVISIONS					
DATE	NO.	BY	REVISIONS		
5-15-02	R1	SB	PER APPROVAL COMMENTS		
6-10-02	R2	SB	PER APPROVAL COMMENTS		
7-31-02	R3	GM	REVISED HOLE LOCATION IN OSL		
ORDER NO. 02-18077H22					
DETAILS OF PL GIRDER - SPAN A					
LINE 1					
PROJECT KCS R.R. UNDERPASS IMPROVEMENTS					
KCS RAILROAD OVER US 165					
LOCATION RAPIDES PARISH, LA					
CUSTOMER MERRICK CONSTRUCTION CO., INC.					
CAROLINA STEEL CORPORATION					
MADE BY JB					
CHECKED BY PDC/SB					
SQUAD LEADER FMW					
DATE 02-02					
					SHEET HF1A