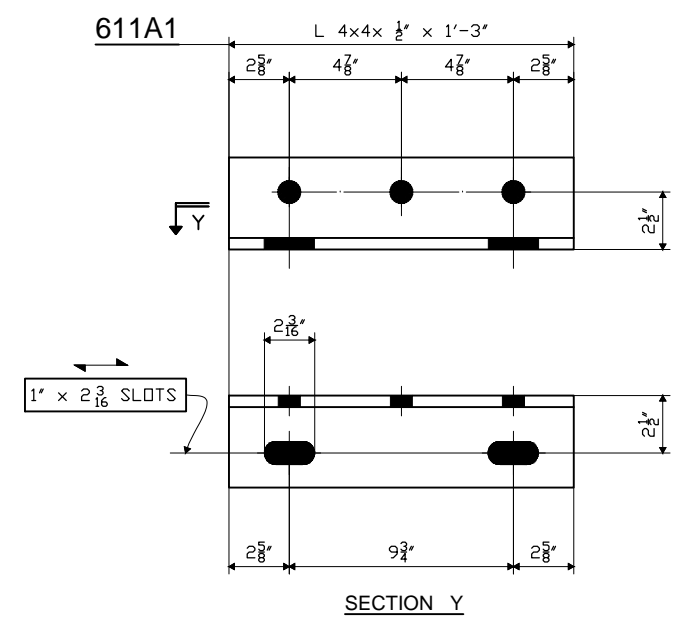


611D1

PAINT NOTE "D"
 AREA SHOWN WITH DOTTED PATTERN DENOTES FAYING SURFACE. APPLY PRIMER ONLY (BS)



SHOP BILL

ITEM NO.	SHIPPING LIST		PCS RECD	DESCRIPTION	LENGTH	ASSEMBLY MARK	REMARKS	MTRL. SPEC.	MATERIAL	APPLICATION
	NO.	MARK								
1										
2										
3	1	611D1		END DIAPHRAGM						
4	1		1	PL 3/4 x 69 5/16	12	4	A	V	A709-50W	3412IS 17
5	1		1	PL 3/4 x 10	10	4 1/2	C	V	A709-50W	3412IS 13
6	1		1	PL 3/4 x 10	10	4 1/2	D	V	A709-50W	3412IS 13
7	2		2	PL 1 1/2 x 4 1/2	5	1 5/16	E	FIN-2E	V A709-50W	3412IS 8
8	2		2	PL 1 1/2 x 4 1/2	5	1 3/4	G	FIN-2E	V A709-50W	3412IS 8
9										
10										
11										
12										
13										
14										
15	2	611A1	2	L 4 x 4 x 1/2	1	3			A709-50W	SHN
16										
17										
18										
19										
20										
21										
22										
23										
24										
25	DOMESTIC MATERIAL									

SEE HN601 FOR FABRICATION NOTES

PDC Sample DWG 212
 MON/FAYETTE EXPRESSWAY
 CAROLINA STEEL CORPORATION
 WALSH CONSTRUCTION CO.
DIAPHRAGM Detail
PENNDOT 2008

FABRICATED BY ABINGDON
 HOLES - 1/2" Ø SHOP FASTENERS
 SHOP PAINT PAINTED PER HN601 & AS NOTED
 SHOP INSPECTION
 GENERAL NOTES

REVISIONS		
DATE	NO.	BY
	R1	

STRUCTURE No. MF-157 (SB)
 CONTRACT # 01-002-FCXH-C
 MON/FAYETTE EXPRESSWAY
 UNIONTOWN TO BROWNSVILLE
 S.R. 0043 SECTION 51A1
 STA: 101+74.44 M.P. M-13.86

ORDER NO. 08-18498H62
 DETAILS OF END DIAPHRAGM - ABUT 1
 SOUTHBOUND

PROJECT PA TURNPIKE 0043 OVER S.R. 4039
 (NORTHGATE HIGHWAY)

LOCATION FAYETTE COUNTY, PA
 CUSTOMER WALSH CONSTRUCTION CO.
CAROLINA STEEL CORPORATION

MADE BY WS
 CHECKED BY PDC/SB
 SOUND LEADER Precise Drafting Co, Inc.
 DATE 05-08 SHEET HF611